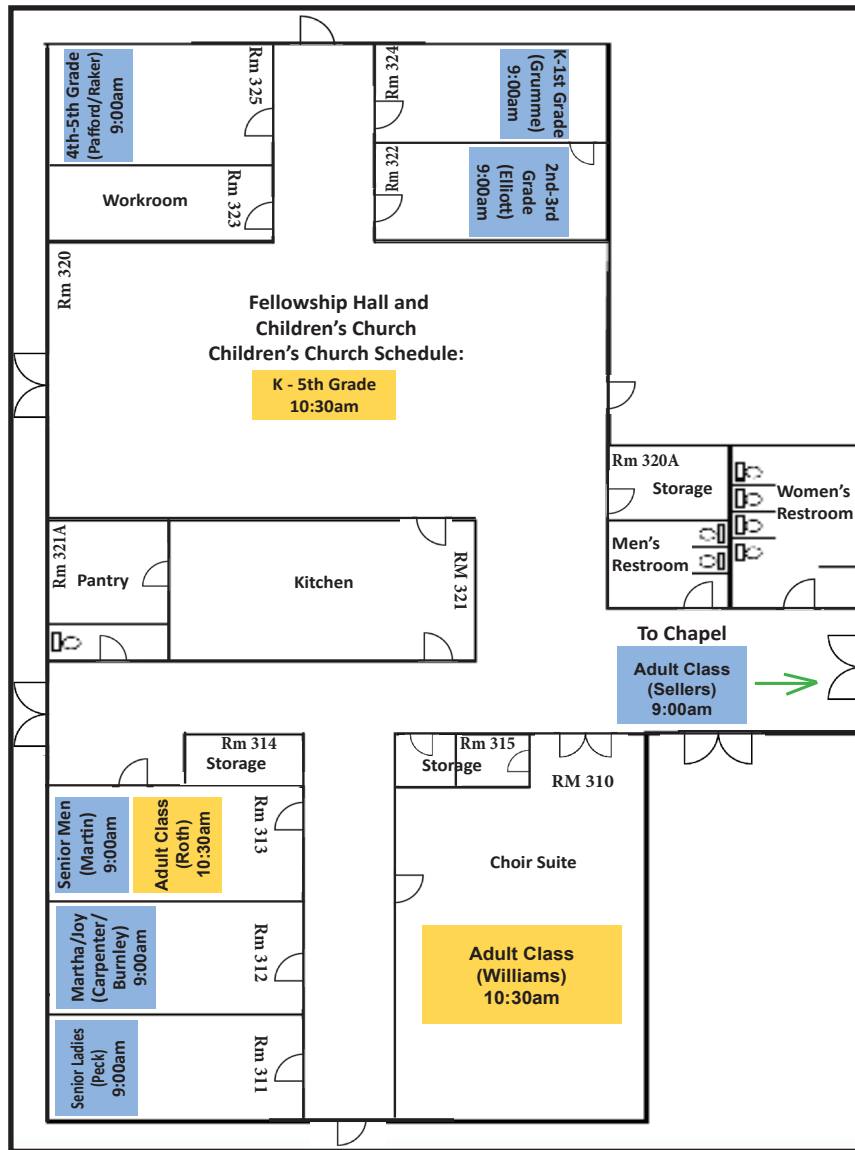


# Fellowship Wing

Session A (9:00am)

Session B (10:30am)



At Morningside, we feel it is important for each of us to get connected into a smaller group setting, which we call Connection Groups. It is in this context where relationships are established and grow, and ministry can take place. **Connection Groups are a way for you to make connections with others while you grow in your connection with Christ.**

**Preschool: Babies to Kindergarten:** (rooms 104-110) Morningside Preschool provides children with age appropriate Bible-centered lessons that show the love our Savior has for each of them. Children are taught weekly by engaging and loving teachers through stories, crafts, play, and snack. For further information, contact Ashley Hodges, Preschool Director at [ashley@morningsidetlh.org](mailto:ashley@morningsidetlh.org).

**Children: Kindergarten - 5th Grade:** (rooms 322-325) Our Connection Group hour provides children the opportunity to join friends of similar age as they learn truths from God's Word. It is our privilege to invest in each child and to help them understand the love of Jesus in fun and creative ways. For further information, contact Jamie Pafford, Children & Families Minister at 850-878-5503 or [jamie@morningsidetlh.org](mailto:jamie@morningsidetlh.org).

**Youth:** (Rooms 207-210) Students attend separate Connection Group classes based on their age and gender. Classes are designed to help students understand their relationship with God. Leaders facilitate Bible-centered discussions designed to help our young people grow in their relationship with Christ. For further information, contact Ross Decker, Student Pastor at 850-878-5503 or [ross@morningsidetlh.org](mailto:ross@morningsidetlh.org).

**Adults:** We invite you to join us each Sunday morning for engaging Bible study and edifying Christian fellowship. We have classes that are more structured, using Bible study curriculum to help guide class time and classes that are less structured, and discussion led, guided by the content from the morning sermon. Following is a breakdown of those class offerings. If you have any questions or need more information, contact Jeff Sellers, Minister of Education at 850-878-5503 or [jeff@morningsidetlh.org](mailto:jeff@morningsidetlh.org).

**College/Career Class:** Our college ministry, designed for those 18 years into their 20's, currently meets for discipleship on Sunday evenings at 7:15pm. Young adults desiring to be challenged to live out the Word in their lives whether at home, school, or in the workplace will enjoy this discipleship opportunity.

Questions regarding Morningside's Connection Groups and the education ministry for all ages can be directed to the church office by calling 850-878-5503 or by email to [jeff@morningsidetlh.org](mailto:jeff@morningsidetlh.org) or [office@morningsidetlh.org](mailto:office@morningsidetlh.org).

**The Lion's Den:** (Room 216) This class is discussion driven, focusing on the content from the morning's sermon, giving members opportunity for in-depth discussion and real-life application. This class is taught by Ray Hernandez, and is comprised of adults of all ages.

**Sheppard Class:** (Room 205) This class is discussion driven, focusing on the content from the morning's sermon, and is a co-ed class of married and single adults. The class is taught by Tim Sheppard.

**Williams Class:** (Room 310) This class is discussion driven, focusing on the content from the morning's sermon, giving members opportunity for in-depth discussion and real-life application. This class is taught by Rob Williams, and is comprised of "empty nesters."

**Sellers Class:** (Chapel) This class uses Bible study curriculum. The focus in this class is making Bible study engaging with interactive lessons driven by discussion and application. Jeff Sellers teaches this class.

**Martha/Joy Classes:** (Room 312) These classes use Bible study curriculum and are comprised of a mixture of married and single Senior Adult women and is led by Marie Burnley, and Jessie Carpenter.

**Senior Adult Men:** (Room 313) This class uses Bible study curriculum and is made up of Senior men, both married and single. The class is taught by John Martin.

**Men's Class:** (Room 206) This class uses Bible study curriculum. It is made up of men of all ages, life stages and backgrounds. Brian Morris teaches this class.

**Ladies Class I:** (Room 104) This class uses Bible study curriculum. It is made up of women of diverse backgrounds, life stages and ages, but primarily just women desiring a weekly encounter where grace and growth happen, "so we leave better equipped to imitate Christ in our everyday life." Marie Daniel teaches this class.

**Ladies Class II:** (Room 311) This class uses Bible study curriculum. The members of this class are active Senior ladies, varying in ages, who are eager to learn from God's Word and make application to their lives. They care for each other, learn from each other, and invest in each other's lives. This class is taught by Kathy Peck.

**Brimer/Grantham Class:** (Room 204) This class uses Bible study curriculum and is co- led by Richard Brimer and Terence Grantham. The class is a co-ed class of adults in the 30-60 age range.

**New Married Class:** (Room 206) This class is driven by focusing on content of the morning's sermon and is geared toward those who are looking to connect with other newly married couples. This class is led by Marshall Griffiss.

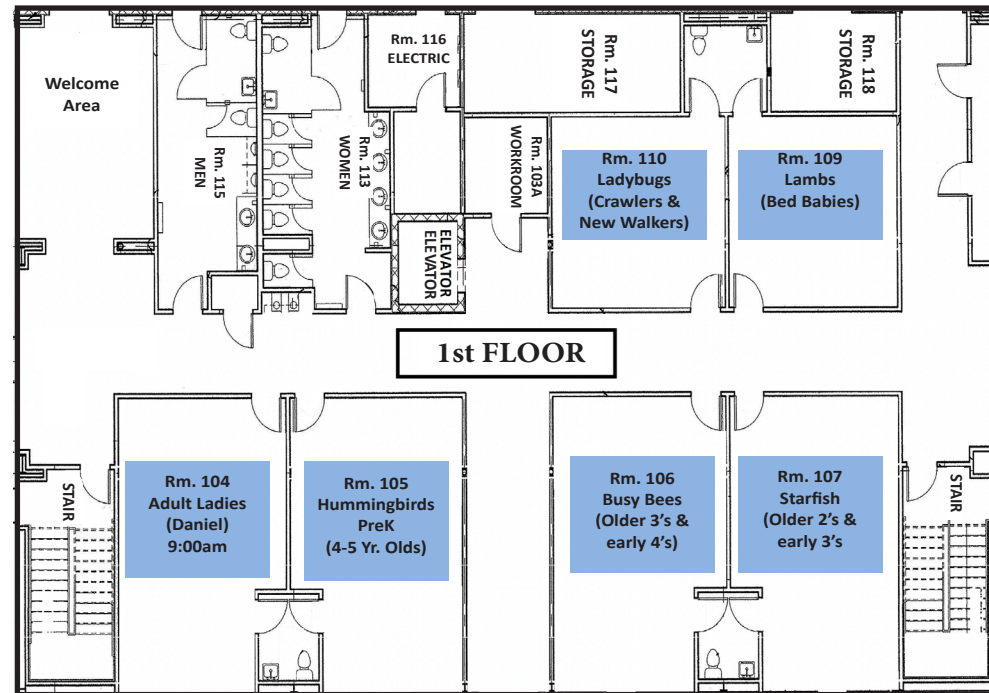
**Roth Class:** (Room 313) This class focuses on content from the morning's sermon and is a co-ed class of adults of all ages. This class is taught by Bill Roth.

**Mildenberger/Fordham Class:** (Room 204) This co-ed adult class is discussion driven, focusing on content from the morning's sermon, giving members opportunity for in-depth discussion. This class is co-taught by Scott Mildenberger and Corey Fordham.

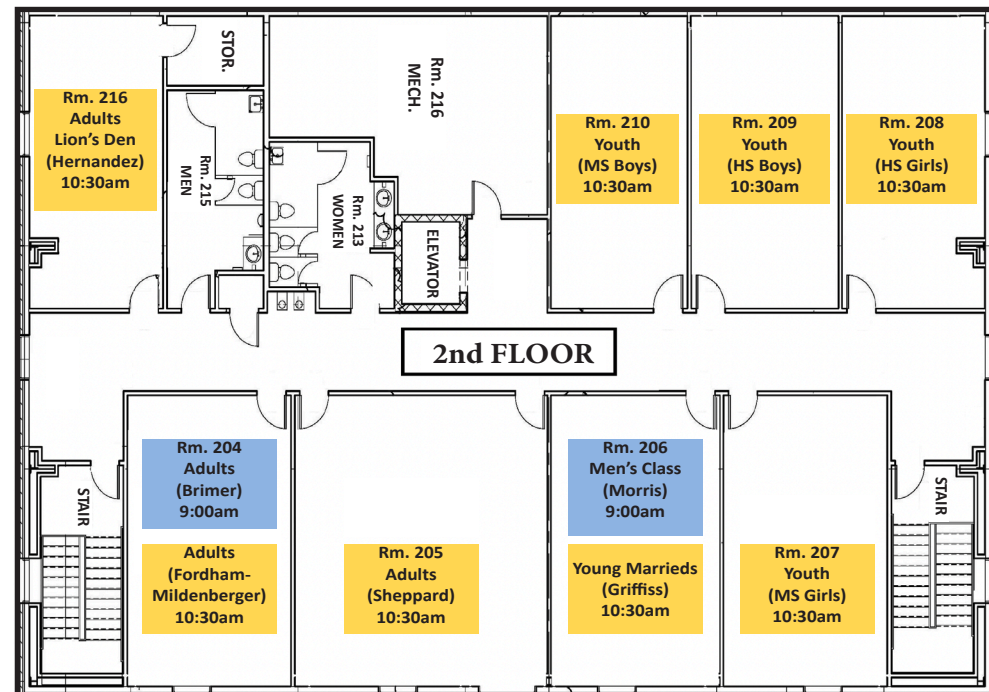
# Education Wing

Session A (9:00am)

Session B (10:30am)



1st FLOOR



2nd FLOOR